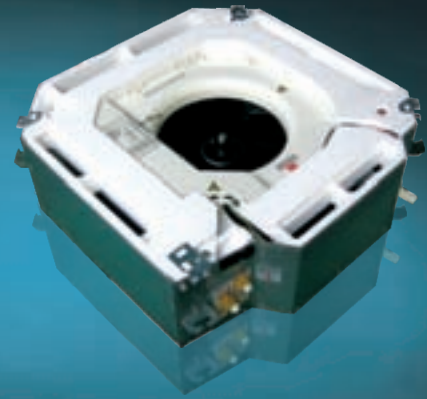


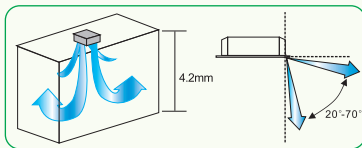


4-way cassette type fan coil unit (drain pump inside)



Characteristic

1、4-way air flowing, which can uniform temperature distribution in the room



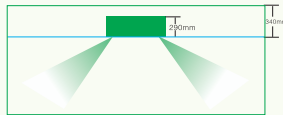
2、Thin design unit which can be installed in a limit ceiling
(the Min. thickness is 260mm)

3、Easy to be installed, Low installation cost

Comparing to the ceiling conceal ducted FCU, we do not need to install the air inlet and outlet, and also the ducted connection and insulation.



4、Remote controller is standard and wire controller is optional



5、Auto swing

Using advanced 3D software to design the centrifugal fan with streamline and big diameter turbine.

6、Quiet running

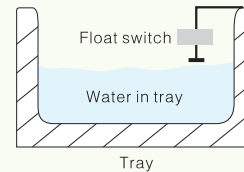
The efficiency of airflow rate, heavy wind volume and low noise is excellent. Because the ventilator wheel is processed to sine strip seam, which enhances its flexibility, and drops the vibration of ventilator during revolving in large scale, simultaneously reduced the motor noise caused by ventilator swinging.



7、High lift water drained pump (750mm), easy to plan the condensate drained pipe



8、Float switch inside to prevent from leaking

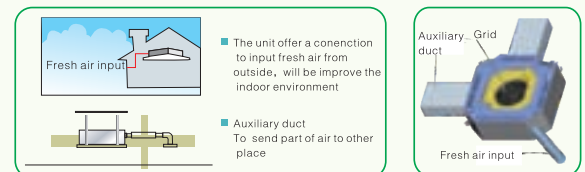


After the water raising to a certain position, the float switch will act and alarm, then the unit will cut off the water valve or stop the fan motor.

9、Fresh air can be inputed from outside

Fresh air inlet can import some fresh wind from outside, and ensure the quality of indoor air.

Thus, the consumer can share the fresh and clean air to lessen illness caused by air condition.



10、Auxiliary duct is available to send part of air to other place, in order to improve indoor temperature and air quality

11、Negative ion generator is optional

12、The water remain in the tray is easy to drained by manual.

There are a rubber plug on the water collecting tray, we can drained out the dirty water by manual.

Because the water remained inside the tray will keep for a long time, then there will be very dirty and there might be lots bacterial inside too, draining out the dirty water is benefit to the health and also reduce the possible of pump blocking.

13、Griall is optional to prevent from hand injury

14、“C” type heat exchanger, blue fin

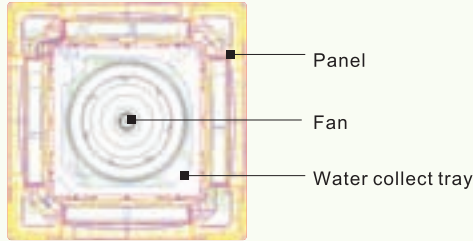
“C” type exchanger is helpful to improve the well-distributed of terminal air duct and refrigerate system, make the efficiency of multi flow more even and it reduced the probable of system leak.

Blue fin extremely reduced the coagulate water detained in the aluminum flake, so it reduce the wind resistance, improved the efficiency of heat exchanger.



15. Fan and fan motor is easy to maintain

After take out the air grid of the panel, we can easily take out the electric box, then the fan and fan motor can be easily taken out too.



16. Square panels ,which can choose the direction of inlet/outlet water connection freely

17. Corner cover design makes installation and maintain conveniently.

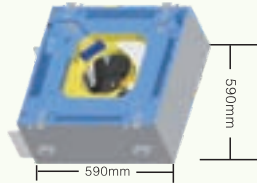


It is no necessary to remove the panel when maintain.

after move the corner, you can adjust the hook and bolt easily



18. The dimension of E1 unit is only 590×590mm, which can be installed in a standard ceiling opening.

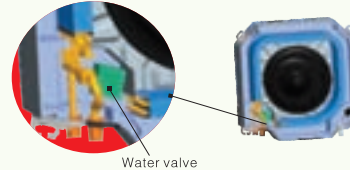


19. Easily interfaced with most widely used BMS and proprietary supervisory system based on mod Bus protocol.



20. Water valve can be installed inside the unit(optional).

Water valve is used to controll the on/off water flowing to the unit, we installed the valve into the unit ,so the user do not need to installed it by themself.



21. Stainless steel hose can be installed to the unit and act as the inlet/outlet water connection of the unit(optional)

Stainless steel hose is used to reduce the concussion of water pipe ,big concussion will cause to broken and leaking.

we installed the stainless steel hose inside the unit,so the user do not need to install it again.

The pre-installed hose reduce also the leaking possible



22. 4-tube system is optional

There are both cooling and heating water circle coil inside the unit,so the unit can deal with cooling or heating at the same time.

4pipe systme is always used in the place where need to deal with heating and cooling by refrigeration system at the same time.For example, a room need heating and another need cooling. 5-star hotel always use this kinds FCU.

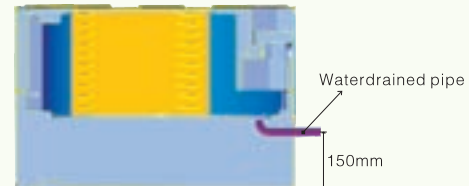


> Characteristic

1. Drained by nature,running stable because without water pump,P.C.B which is easy to damaged
2. 4-way air flowing,which can uniform temperature distribution in the room
3. Easy to be installed, Low installation cost

Comparing to the ceiling conceal ducted FCU,we do not need to install the air inlet and outlet,and also the ducted connection and insulation.

4. 150mm drained dropping,drain water quickly.





Shandong Vicot Air Conditioning Co.,Ltd



PERFORMANCE OF CASSETTE TYPE FAN COIL(4-WAY,2 TUBE)---DRAINED BY WATER PUMP

model			VCF034K2H	VCF051K2H	VCF068K2H	VCF085K2H	VCF102K2H	VCF136K2H	VCF170K2H	VCF204K2H	VCF238K2H	
model of panel			VB-S****E1			VB-S****E2			VB-S****E3			
power supply			220V,50Hz,1Ph									
air volume	H	m ³ /h	340	510	680	850	1020	1360	1700	2040	2380	
	M		280	380	515	660	765	1040	1280	1550	1800	
	L		180	260	340	430	530	710	860	1050	1280	
static pressure		Pa	0	0	0	0	0	0	0	0	0	
cooling capacity	TH	H	W	1800	2700	3600	4500	5400	7200	9000	10800	12600
			BTU/h	6142	9212	12283	15354	18425	24566	30708	36850	42991
	SH		W	1311	1971	2700	3184	4196	5362	6707	8072	9070
			BTU/h	4473	6725	9212	10864	14317	18295	22884	27542	30947
	TH	M	W	1500	2460	3000	3715	4423	6435	7848	9296	10500
			W	994	1555	1995	2426	3041	4236	5393	6603	7190
SH	L	W	1391	2057	2479	2921	3793	5604	7223	8534	8900	
		W	823	1200	1530	1826	2373	3284	4416	5248	5500	
heating capacity	H	W	2700	4050	5400	6750	8100	10800	13500	16200	18900	
	M	W	1949	2770	3938	4902	5694	7924	10473	12997	13900	
	L	W	1297	1774	2779	3505	3876	5421	6992	8645	9700	
noise	H	0Pa	dB(A)	37	39	41	43	45	46	48	50	51
power input	H	0Pa	W	37	52	62	76	96	134	152	189	228
waterflow volume			m ³ /h	0.31	0.46	0.62	0.77	0.93	1.23	1.54	1.85	2.16
water pressure dropping			kPa	11.8	11.8	22.4	27	29.6	29.6	35.4	35.4	40
dimension of water(in & out)connection pipe			in	ZG3/4"	ZG3/4"	ZG3/4"	ZG3/4"	ZG3/4"	ZG3/4"	ZG3/4"	ZG3/4"	ZG3/4"
			out	ZG3/4"	ZG3/4"	ZG3/4"	ZG3/4"	ZG3/4"	ZG3/4"	ZG3/4"	ZG3/4"	ZG3/4"
coil			type	high efficient copper pipe to wear Hydrophilic aluminum coil								
dimension of water drain			mm	∅ 26	∅ 26	∅ 26	∅ 26	∅ 26	∅ 26	∅ 26	∅ 26	∅ 26
net dimension	unit	L×W×H		590*590*270			752*752*293			822*822*263	822*822*293	
	panel			650*650*45			850*850*45			950*950*45		
net weight	unit	kg		19	19	20	23	23	25	28	28	29
	panel			2.2			4.5			6		



Shandong Vicot Air Conditioning Co.,Ltd



PERFORMANCE OF CASSETTE TYPE FAN COIL(4-WAY,4 TUBE)---DRAINED BY WATER PUMP

model				VCF034K4H	VCF051K4H	VCF068K4H	VCF085K4H	VCF102K4H	VCF136K4H	VCF170K4H	VCF204K4H	VCF238K4H		
model of panel				VB-S****K1			VB-S****K2			VB-S****K3				
power supply				220V,50Hz,1Ph										
air volume	H	m ³ /h		340	510	680	850	1020	1360	1700	2040	2380		
	M			280	380	515	660	765	1040	1280	1550	1800		
	L			180	260	340	430	530	710	860	1050	1280		
static pressure			Pa	0	0	0	0	0	0	0	0	0		
cooling capacity	TH	H	W	1350	2030	2700	3380	4050	5400	6750	8100	9450		
			BTU/h	4606	6926	9212	11533	13819	18425	23031	27637	32243		
			SH	W	1010	1520	2080	2450	3230	4130	5160	6220	6989	
				BTU/h	3446	5186	7097	8359	11021	14092	17606	21223	23846	
	TH	M	W	1130	1850	2250	2790	3320	4830	5890	6970	7873		
			SH	W	770	1200	1540	1870	2340	3260	4150	5080	5532	
			TH	L	W	1040	1540	1860	2190	2840	4200	5420	6400	6674
					SH	W	630	920	1180	1410	1830	2530	3400	4040
heating capacity	H		W	1080	1620	2160	2700	3240	4320	5400	6480	7560		
	M		W	780	1108	1575	1961	2278	3170	4189	5199	5560		
	L		W	519	710	1112	1402	1550	2168	2797	3458	3880		
noise	H	0Pa	dB(A)	37	39	41	43	45	46	48	50	51		
power input	H	0Pa	W	37	52	62	76	96	134	152	189	228		
waterflow volume	Cooling	m ³ /h		0.23	0.35	0.46	0.58	0.69	0.93	1.16	1.39	1.60		
waterflow volume	heating			0.09	0.14	0.19	0.23	0.28	0.37	0.46	0.56	0.70		
water pressure dropping	cooling	kPa		8.26	8.26	15.68	18.9	20.72	20.72	24.78	24.78	40		
	heating			3.54	3.54	6.72	8.1	8.88	8.88	10.62	10.62	16		
dimension of water(in & out)connection pipe	cooling/heating			ZG3/4"	ZG3/4"	ZG3/4"	ZG3/4"	ZG3/4"	ZG3/4"	ZG3/4"	ZG3/4"	ZG3/4"		
				ZG3/4"	ZG3/4"	ZG3/4"	ZG3/4"	ZG3/4"	ZG3/4"	ZG3/4"	ZG3/4"	ZG3/4"		
coil			type	high efficient copper pipe to wear Hydrophilic aluminum coil										
dimension of water drain pipe			mm	φ 26	φ 26	φ 26	φ 26	φ 26	φ 26	φ 26	φ 26	φ 26		
net dimension	unit	L×W×H		590*590*420			752*752*443			822*822*413			822*822*443	
	panel			650*650*45			850*850*45			950*950*45				
net weight	unit	kg		20	20	21	24	24	26	29	29	30		
	panel			2.2			4.5			6				